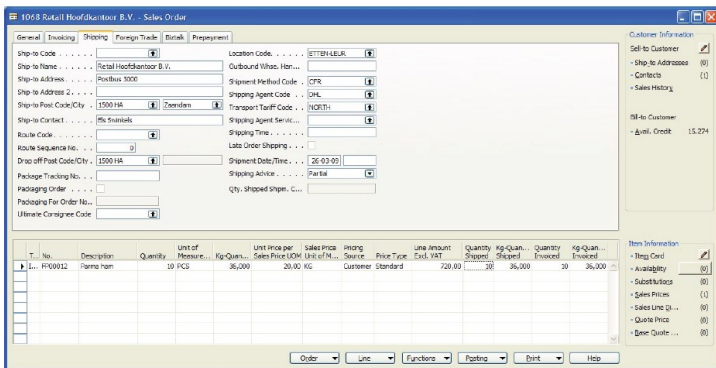




Many companies in the food and beverage industry have to deal with items sold by weight. The SI Foodware® – Catch weight solution offers a dual unit of measure system that is fully integrated with Dynamics® NAV and other SI Foodware solutions. This dual unit of measure system can also be used to calculate and define cost prices, purchase prices and sales prices. You can also add controls to check the maximum difference in weight between all logistics transactions. The SI Foodware – Catch Weight solution provides you with the tools you need to control the administrative differences in weight.

## SI Foodware

The Food and Beverage industry is characterised by specific requirements which can often not be catered for by a standard company-wide solution. For this reason Novamindz and its resellers have combined their many years of knowledge and experience into SI Foodware®. In combination with Microsoft Dynamics® NAV, SI Foodware® forms a fully integrated standard company-wide ERP solution specifically for food and beverage companies. SI Foodware is under continuous development and meets the latest industry requirements. This creates a specific solution, where costs remain manageable as the amount of customisation is reduced to a minimum. SI Foodware has been recognised by Microsoft with the highest quality label: 'Certified for Microsoft Dynamics'. SI Foodware consists of a number of integrated solutions, one of which is SI Foodware - Catch Weight. This solution means that you can make



kilograms the leading unit for calculating the cost purchase price and sales price when you work with items sold by weight.

## Your situation

Your company purchases, produces or delivers products in both pieces as well as kilograms. In this situation, kilograms can be leading for the calculation of cost, purchase and sales prices. Traditional examples here are the cheese and meat industry. Of course, these products can show up in multiple purchase and sales unit of measures.

## The solution

Microsoft Dynamics NAV® combined with SI Foodware® - Catch Weight.

## Your advantage

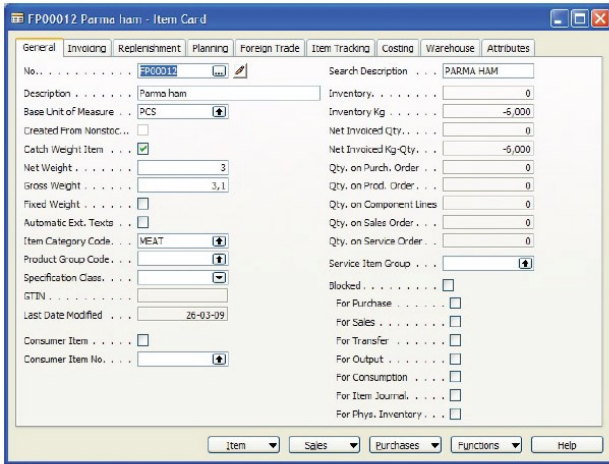
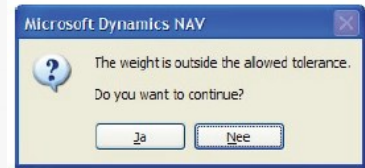
The SI Foodware - Catch Weight solution offers a dual unit of measure system that is fully integrated with Dynamics NAV and SI Foodware. This dual unit of measure system can also be used to calculate and define cost prices, purchase prices and sales prices. The catch weight solution provides you with the tools you need to control the administrative differences in weight.

## Catch Weight Items

By setting a simple system parameter you decide whether your organisation will make use of the dual unit of measure system. You can then determine per item whether or not it is a catch weight item. If an item becomes a catch weight item, the number of units is converted into kilograms. In addition, a catch weight item may have a fixed or variable weight. Once you define an item as a fixed weight item, you will not be able to change it to a variable weight item as this is one of the conditions for working with standard costing. You can also opt to define the purchase prices and sales prices only per kilogram. This implies that when you change the kilogram quantity in a sales transaction then the sales price per piece will be automatically recalculated. Cost prices can be calculated in either the standard unit of measure or in kilograms.



Within the general settings of the Catch Weight solution, you may set a 'maximum variance percentage standard eight'. This setting means that there is a certain tolerance for the weight of an item related to the standard weight for that item. If you implement both the Catch Weight and Scales Connection solutions in your warehouse, you can elect to have the weight automatically entered from the weighing scales.

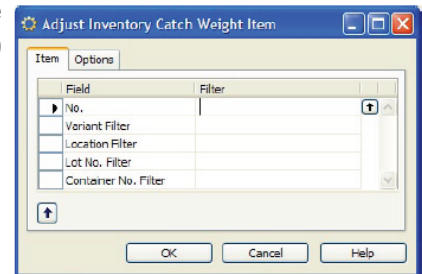


If the usage method of a consumption item is set to backwards' (backflushing), you can indicate that consumption has to be calculated based on the weight instead of pieces by using the checkmark 'Flushing based on Kg-output'.

### Catch Weight Correction

In practice, administrative differences will arise as the inventory does not have to be increased or decreased in accordance with the standard weight. Differences can also arise due to dehydration. In the example, a lot of 100 parma hams is purchased with a total weight of 550 kilograms.

This lot is subsequently sold in two sales shipments, each of 50 pieces, the total weight of the first order was 240 kg and the total weight of the second order was 250 kilograms. Now all that remains is zero pieces weighing 60 kilograms. The inventory value is based on kilograms, there is no inventory remaining but it does have a value which is incorrect. Within SI Foodware, you can use the batch utility 'Adjust Inventory Catch Weight Item' to correct these errors. This batch utility corrects both the kg quantity as well as the inventory value.



Posting Date	Entry Type	Document Type	Document No.	Item No.	Quantity	Kg-Quan...	Invoiced Quantity	Remaining Quantity	Remaining Kg-Quan...	Cost Amount (Expected)	Cost Amount (Actual)	Cost Amount (Actual) Wei...	Entry No.
26-03-09	Purchase	Purchase Receipt	107007	FP00012	10	30,000	10	0	0,000	0,00	480,00	96,00	126
26-03-09	Sale	Sales Shipment	102017	FP00012	-10	-36,000	-10	0	0,000	0,00	-576,00	0,00	127
26-03-09	Positive Adj...		T00014	FP00012	0,01		0,01	0	0,000	0,00	96,00	0,00	128
26-03-09	Negative Adj...		T00014	FP00012	-0,01		-0,01	0	0,000	0,00	0,00	0,00	129
26-03-09	Positive Adj...		T00014	FP00012	0,01	6,000	0,01	0	0,000	0,00	0,00	0,00	130
26-03-09	Negative Adj...		T00014	FP00012	-0,01		-0,01	0	0,000	0,00	0,00	0,00	131

### Kilograms in Analysis

If you do not want to use kilograms in the process transactions but do want to take kilograms into account in your analyses, you can use the functionality 'Kilogram in analysis'. This will enable you to work with kilograms in the analysis screens.

For further information about SI Foodware and Catch Weight, please visit [www.novamindz.com](http://www.novamindz.com). You can also contact us using the contact details shown below.

**Liberty Grove Software**

☎ (630) 858-7388

✉ [foodware@libertygrove.com](mailto:foodware@libertygrove.com)

**Microsoft Partner**  
Silver Enterprise Resource Planning  
Microsoft Dynamics NAV